

# NHS Acute Trusts Survey of Emergency Departments 2003

## Dudley Group Of Hospitals NHS Trust

For details on how to interpret these charts and tables, please refer to the document on the patient survey results section of the CHI website. The trusts results are not shown where there are fewer than 30 responses to a question.

### Access and waiting

How long did you wait for your priority to be assessed?

Were you told your priority level?

Was the priority system fair?

How long did you wait to be examined?

Overall how long were you in the emergency department?

How long did you wait for tests to be carried out?

How long did you wait to get to a room or ward and bed?



### Safe, high quality, coordinated care

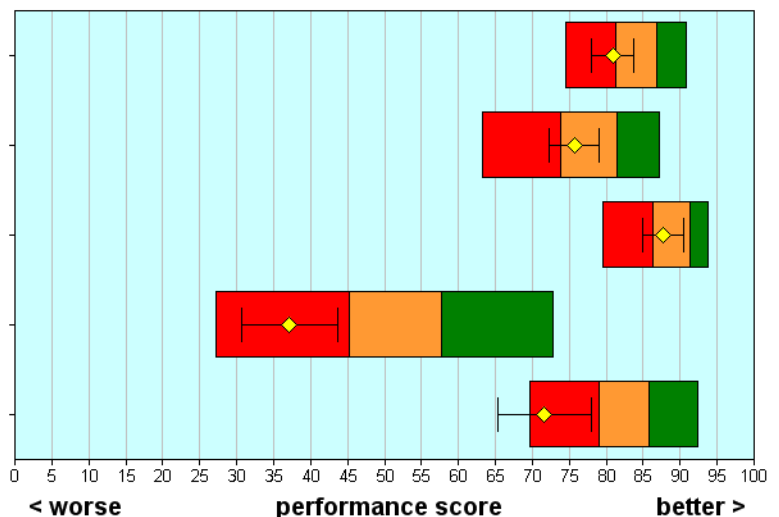
Did you have confidence and trust in the doctors and nurses?

Did doctors and nurses know enough about your condition or treatment?

Did different members of staff give conflicting information?

Were you told about danger signals to watch for after leaving the emergency department?

Were you told who to contact afterwards, if worried about condition/treatment?



<span style="color: green;">■</span> Best performing 20% of trusts	<span style="color: yellow;">◆</span> This trust (trust's score shown as a yellow diamond, with 95% confidence intervals marked by vertical lines on either side)
<span style="color: orange;">■</span> Intermediate 60% of trusts	
<span style="color: red;">■</span> Worst performing 20% of trusts	

# NHS Acute Trusts Survey of Emergency Departments 2003

## Dudley Group Of Hospitals NHS Trust

### Better information, more choice

Did a doctor/nurse explain condition/treatment?

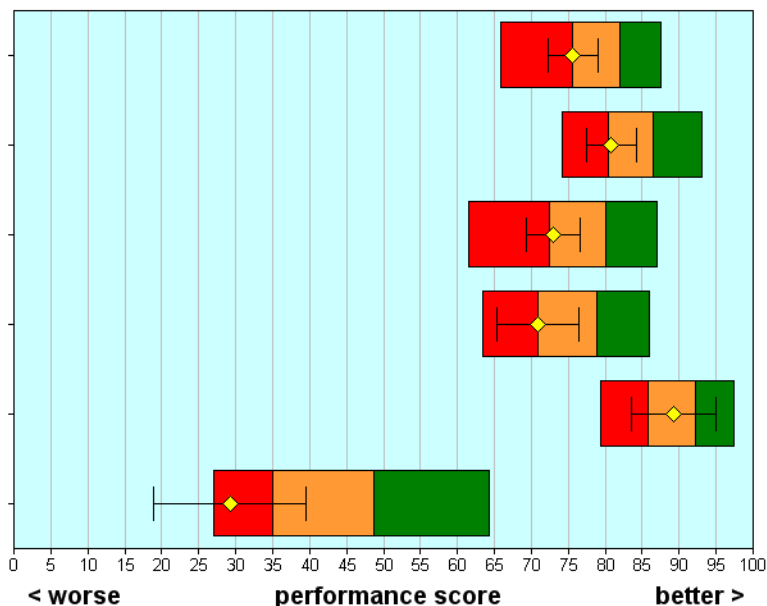
Were you given the right amount of information about your condition/treatment?

Were you involved in decisions about your care and treatment?

Were the results of tests explained?

Were the purposes of medications explained?

Were you informed of medication side effects to watch for?



### Building relationships

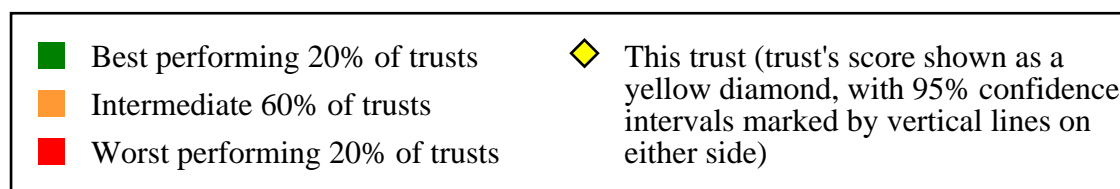
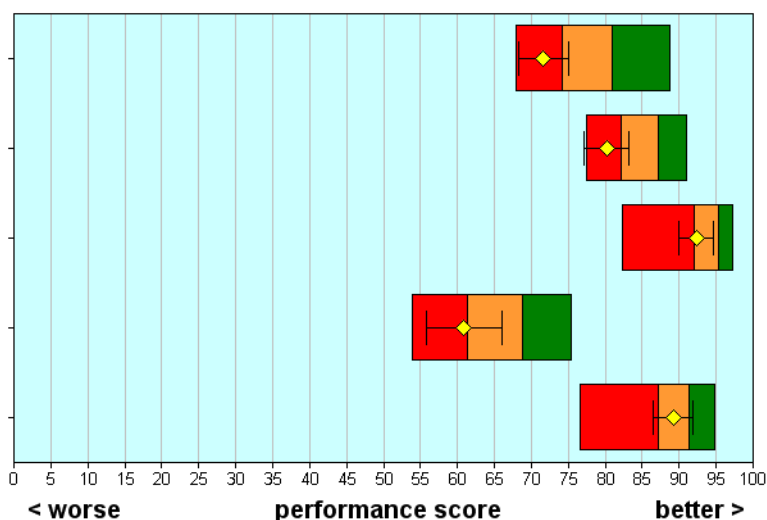
Did you have enough time to discuss your problem with the doctor/nurse?

Did doctors/nurses listen to what you had to say?

Were doctors/nurses not telling you things you wanted to know?

Did a doctor or nurse discuss any anxieties you had about your condition/treatment?

Did doctors/nurses talk in front of you as if you weren't there?



# NHS Acute Trusts Survey of Emergency Departments 2003

## Dudley Group Of Hospitals NHS Trust

### Clean, comfortable, friendly place to be

Were you told how long you would have to wait to be examined?

Were you given enough privacy when discussing your condition/treatment?

Were you given enough privacy when being examined or treated?

How much of the time were you in pain while in the emergency department?

How long did you wait for pain medicine after requesting it?

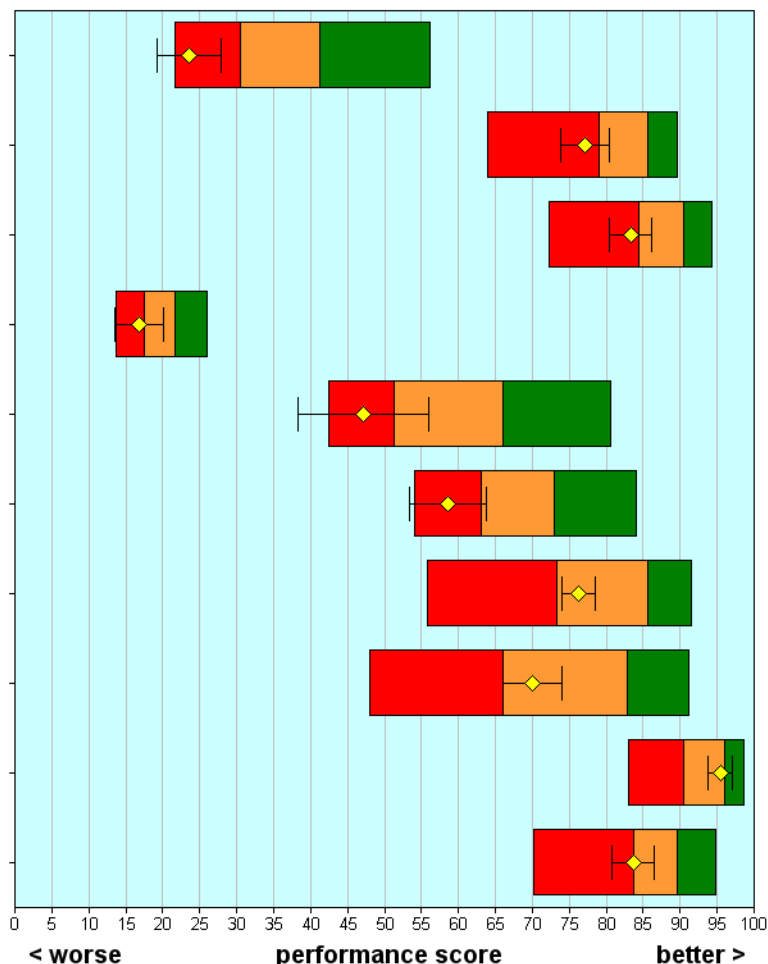
Did hospital staff do everything they could to help control pain?

How clean was the emergency department?

How clean were the toilets in the emergency department?

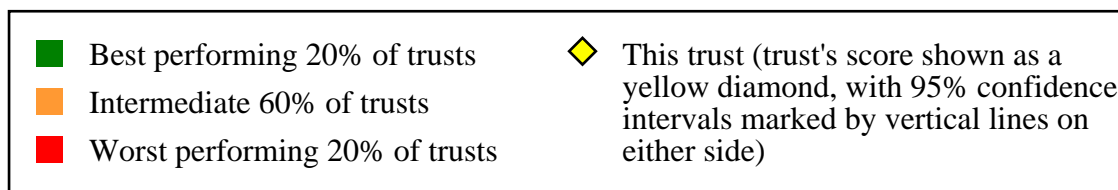
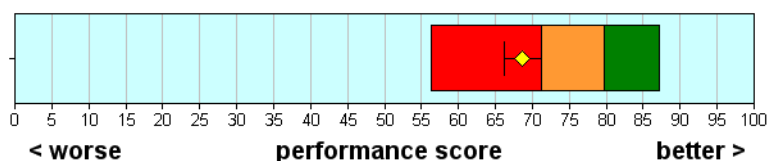
Did you feel threatened by other patients?

Were you treated with respect and dignity?



### Overall impression

Overall, how would you rate the care received in the emergency department?



# NHS Acute Trusts Survey of Emergency Departments 2003

## Dudley Group Of Hospitals NHS Trust

	Scores for this NHS Trust	95% Confidence Intervals		Highest score achieved (all Trusts) Threshold score for the best 20% of NHS Trusts		Number of respondents (this Trust)	
		Lower	Upper				
<b>Access and waiting</b>							
B1	How long did you wait for your priority to be assessed?	58	54	61	67	74	361
B2	Were you told your priority level?	37	32	43	45	73	319
B3	Was the priority system fair?	83	79	88	92	98	276
B4	How long did you wait to be examined?	60	57	63	68	79	367
B6	Overall how long were you in the emergency department?	67	65	70	73	85	369
E2	How long did you wait for tests to be carried out?	67	64	70	69	76	198
H2	How long did you wait to get to a room or ward and bed?	62	56	68	79	94	85
<b>Safe, high quality, coordinated care</b>							
C6	Did you have confidence and trust in the doctors and nurses?	81	78	84	87	91	373
C7	Did doctors and nurses know enough about your condition or treatment?	76	72	79	81	87	320
D6	Did different members of staff give conflicting information?	88	85	90	91	94	376
H6	Were you told about danger signals to watch for after leaving the emergency department?	37	31	44	58	73	172
H7	Were you told who to contact afterwards, if worried about condition/treatment?	72	65	78	86	92	195
<b>Better information, more choice</b>							
C2	Did a doctor/nurse explain condition/treatment?	76	72	79	82	88	356
D3	Were you given the right amount of information about your condition/treatment?	81	77	84	86	93	370
D7	Were you involved in decisions about your care and treatment?	73	69	77	80	87	345
E3	Were the results of tests explained?	71	65	76	79	86	191
H4	Were the purposes of medications explained?	89	83	95	92	97	77
H5	Were you informed of medication side effects to watch for?	29	19	40	49	64	67
<b>Building relationships</b>							
C1	Did you have enough time to discuss your problem with the doctor/nurse?	72	68	75	81	89	371
C3	Did doctors/nurses listen to what you had to say?	80	77	83	87	91	373
C4	Were doctors/nurses not telling you things you wanted to know?	92	90	95	95	97	372
C5	Did a doctor or nurse discuss any anxieties you had about your condition/treatment?	61	56	66	69	75	227
C8	Did doctors/nurses talk in front of you as if you weren't there?	89	86	92	91	95	369

# NHS Acute Trusts Survey of Emergency Departments 2003

## Dudley Group Of Hospitals NHS Trust

	Scores for this NHS Trust	95% Confidence Intervals		Highest score achieved (all Trusts) Threshold score for the best 20% of NHS Trusts		Number of respondents (this Trust)
		Lower	Upper			
<b>Clean, comfortable, friendly place to be</b>						
B5	Were you told how long you would have to wait to be examined?	24	19 28	41	56	313
D4	Were you given enough privacy when discussing your condition/treatment?	77	74 80	86	90	375
D5	Were you given enough privacy when being examined or treated?	83	80 86	91	94	378
F2	How much of the time were you in pain while in the emergency department?	17	13 20	22	26	278
F4	How long did you wait for pain medicine after requesting it?	47	38 56	66	81	62
F5	Did hospital staff do everything they could to help control pain?	59	53 64	73	84	231
G1	How clean was the emergency department?	76	74 79	86	91	374
G2	How clean were the toilets in the emergency department?	70	66 74	83	91	203
G3	Did you feel threatened by other patients?	95	94 97	96	99	381
J1	Were you treated with respect and dignity?	84	81 86	90	95	380
<b>Overall impression</b>						
J2	Overall, how would you rate the care received in the emergency department?	69	66 71	80	87	382

# NHS Acute Trusts Survey of Emergency Departments 2003

## Dudley Group Of Hospitals NHS Trust

### Background Information

<b>The sample</b>	<b>This trust</b>	<b>All trusts</b>
Number of respondents	389	59155
Response rate (percentage)	47	46

<b>Demographic characteristics</b>	<b>This trust</b>	<b>All trusts</b>
Gender (percentage)	(%)	(%)
Male	50	48
Female	50	52
Age group (percentage)	(%)	(%)
Aged 16 - 35	30	28
Aged 36 - 50	21	23
Aged 51 - 65	22	22
Aged 66 or older	26	27
Ethnic group (percentage)	(%)	(%)
White	93	89
Mixed	1	1
Asian or Asian British	2	3
Black or Black British	1	2
Chinese or other ethnic group	0	0
Not known	4	5